



**The Timken Company**

4500 Mt Pleasant St. NW

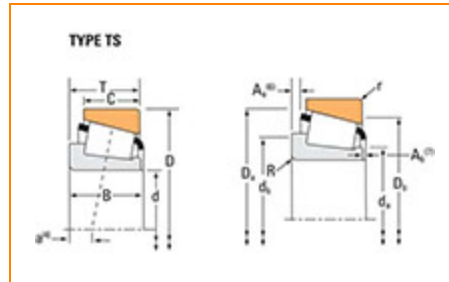
N. Canton, OH 44720

**Phone:** (234) 262-3000

**E-Mail:** [CustomerCAD@timken.com](mailto:CustomerCAD@timken.com) • **Web site:** [www.timken.com](http://www.timken.com)

## Part Number 653, Tapered Roller Bearings - Single Cups - Imperial

This is the most basic and most widely used type of tapered roller bearing. It consists of two main separable parts: the cone (inner ring) assembly and the cup (outer ring). It is typically mounted in opposing pairs on a shaft.



[Specifications](#) | [Dimensions](#) | [Abutment and Fillet Dimensions](#) | [Factors](#)

### Specifications

<b>Series</b>	655
<b>Cup Part Number</b>	653
<b>Design Units</b>	Imperial

### Dimensions

<b>D - Cup Outer Diameter</b>	146.050 mm
<b>C - Cup Width</b>	31.75 mm

### Abutment and Fillet Dimensions

**r - Cup Backface "To Clear"****Radius<sup>1</sup>**

3.3 mm

**Da - Cup Frontface Backing  
Diameter**

139.95 mm

**Db - Cup Backface Backing  
Diameter**

131.06 mm

**Factors****e - ISO Factor<sup>2</sup>**

0.41

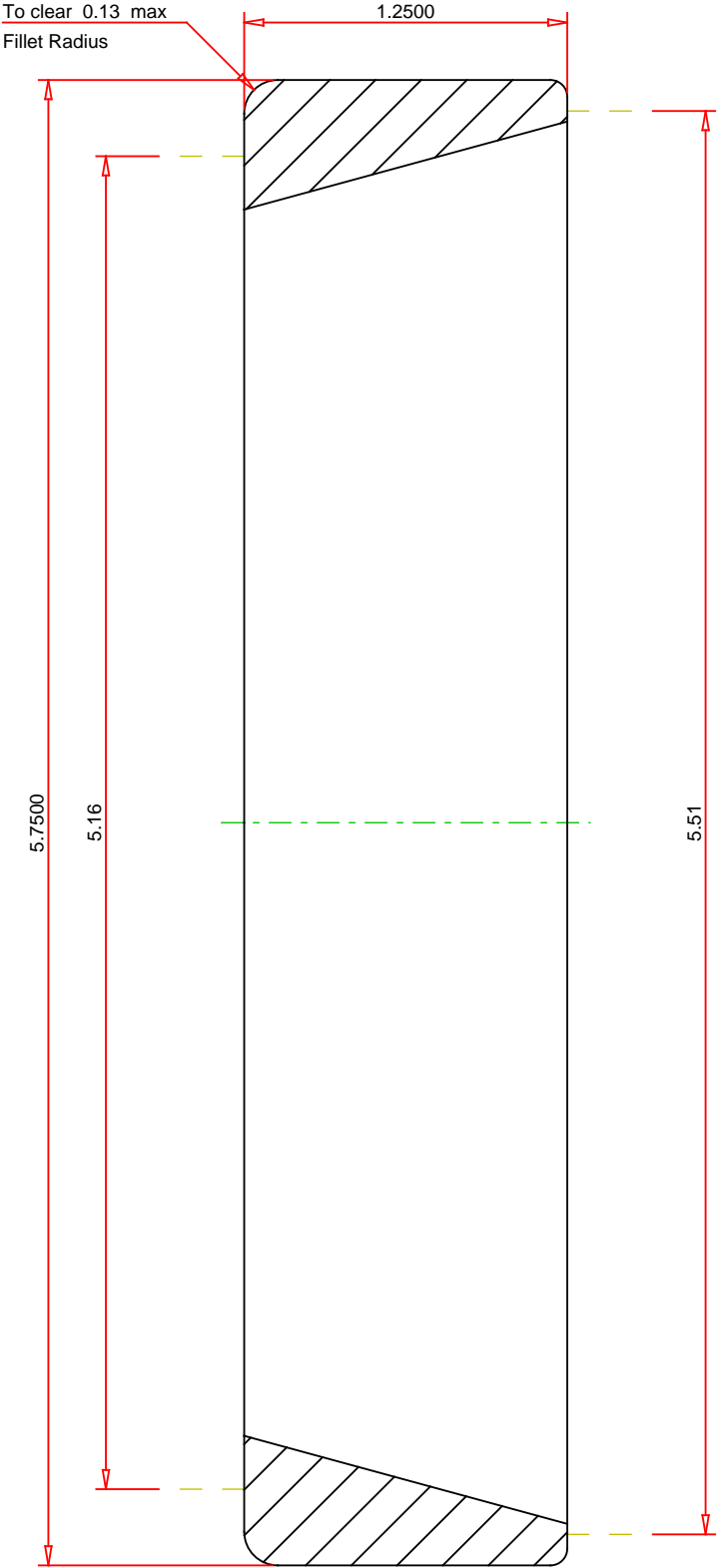
**Y - ISO Factor<sup>3</sup>**

1.47

**Cg - Geometry Factor<sup>4</sup>**

0.0919

<sup>1</sup> These maximum fillet radii will be cleared by the bearing corners.<sup>2</sup> These factors apply for both inch and metric calculations. Consult your Timken representative for instruction on use.<sup>3</sup> These factors apply for both inch and metric calculations. Consult your Timken representative for instruction on use.<sup>4</sup> Geometry constant for Lubrication Life Adjustment Factor a3l.



IMPERIAL UNITS

**TIMKEN®**

**THE TIMKEN COMPANY**  
NORTH CANTON, OHIO USA

**653**  
Tapered Roller Bearings - Single Cups - Imperial